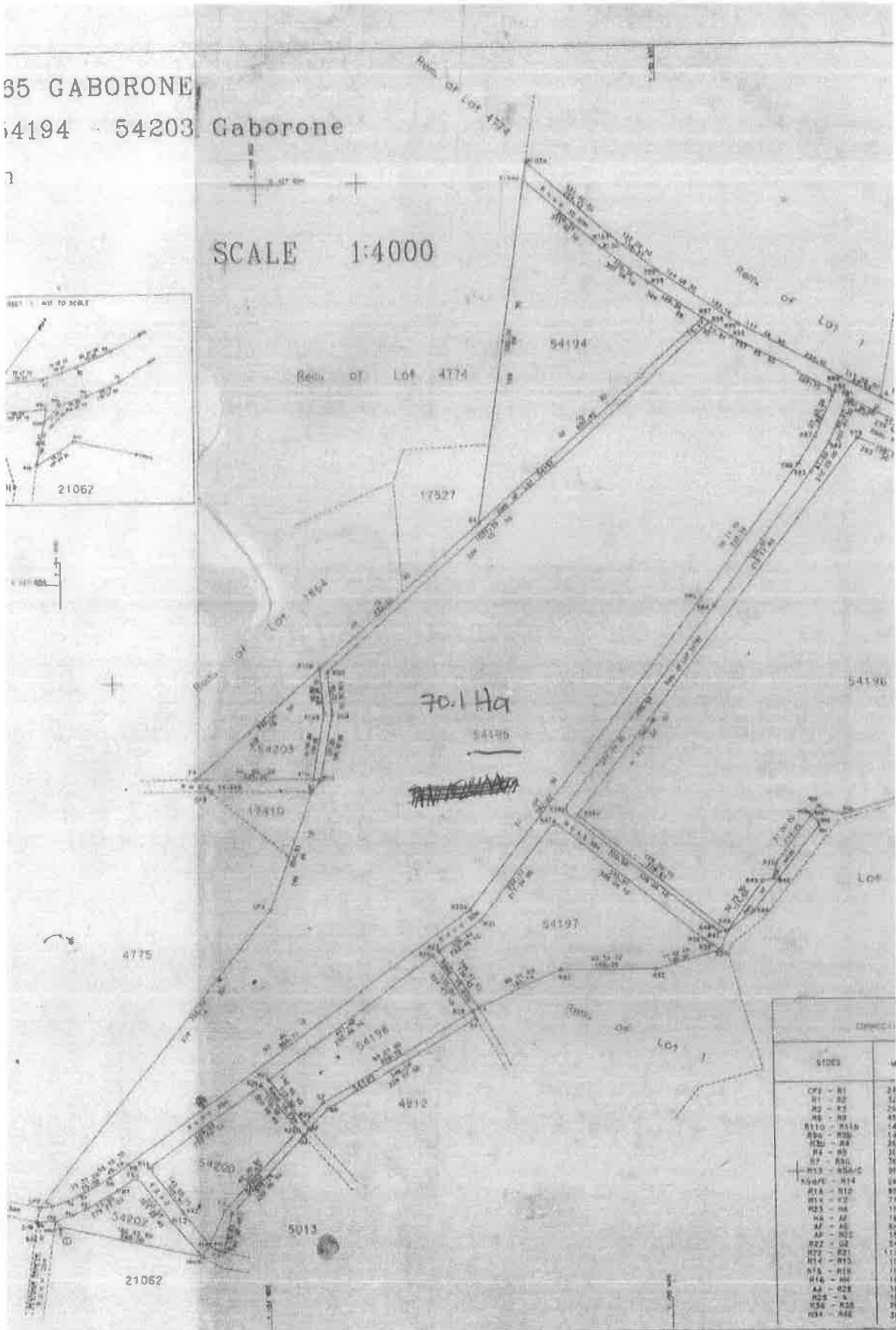
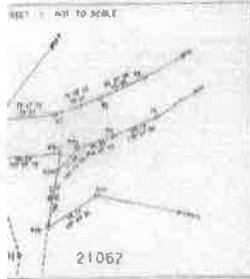


55 GABORONE
 14194 - 54203 Gaborone

1

SCALE 1:4000



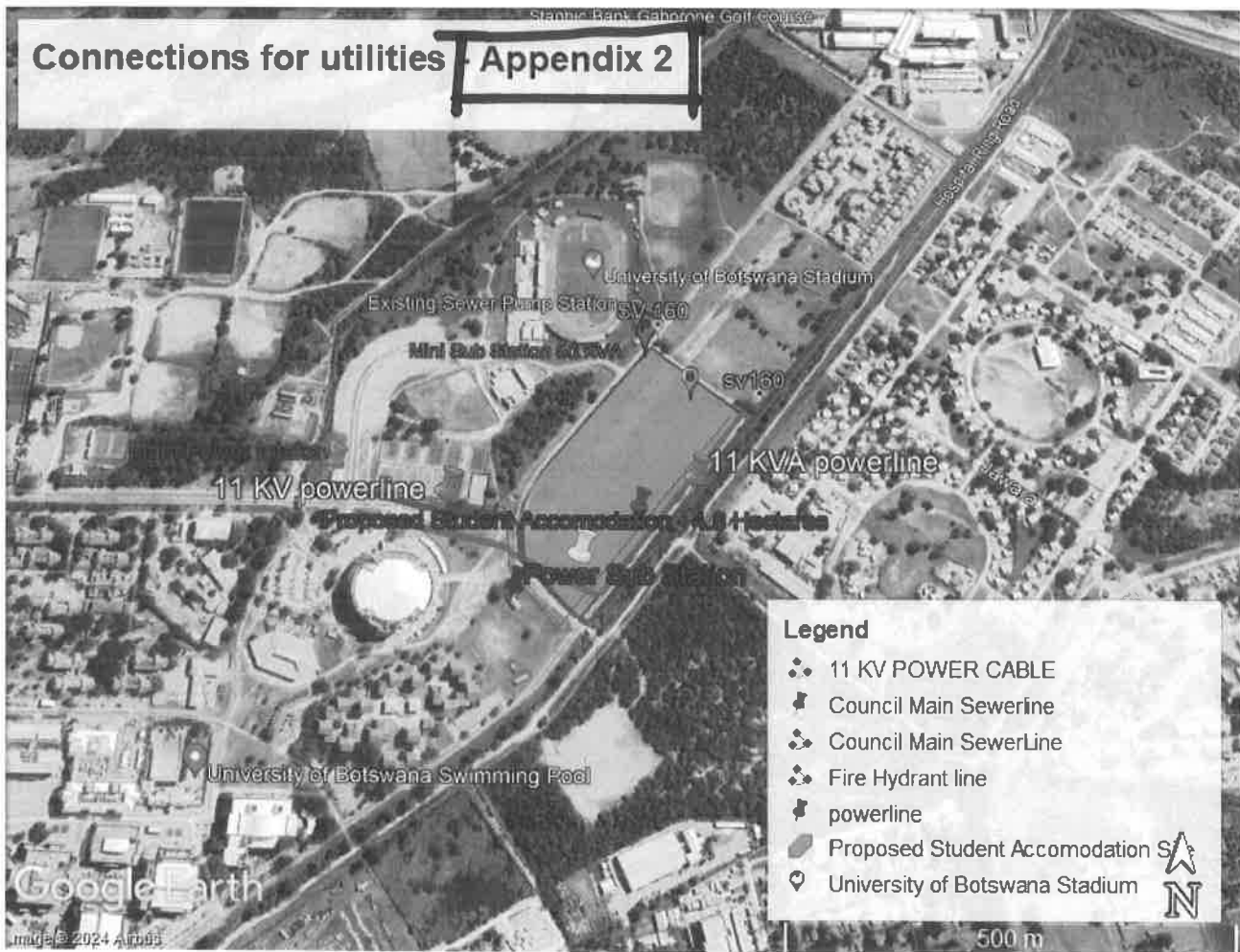
SIDES		M
CP2 - R1		24
R1 - R2		12
R2 - R3		25
R3 - R4		45
R10 - R11		14
R11 - R12		11
R12 - R13		25
R13 - R14		31
R14 - R15		24
R15 - R16		37
R16 - R17		14
R17 - R18		80
R18 - R19		71
R19 - R20		11
R20 - R21		18
R21 - R22		20
R22 - R23		15
R23 - R24		11
R24 - R25		11
R25 - R26		11
R26 - R27		11
R27 - R28		11
R28 - R29		11
R29 - R30		11
R30 - R31		11
R31 - R32		11
R32 - R33		11
R33 - R34		11
R34 - R35		11
R35 - R36		11
R36 - R37		11
R37 - R38		11
R38 - R39		11
R39 - R40		11
R40 - R41		11
R41 - R42		11
R42 - R43		11
R43 - R44		11
R44 - R45		11
R45 - R46		11
R46 - R47		11
R47 - R48		11
R48 - R49		11
R49 - R50		11
R50 - R51		11
R51 - R52		11
R52 - R53		11
R53 - R54		11
R54 - R55		11
R55 - R56		11
R56 - R57		11
R57 - R58		11
R58 - R59		11
R59 - R60		11
R60 - R61		11
R61 - R62		11
R62 - R63		11
R63 - R64		11
R64 - R65		11
R65 - R66		11
R66 - R67		11
R67 - R68		11
R68 - R69		11
R69 - R70		11
R70 - R71		11
R71 - R72		11
R72 - R73		11
R73 - R74		11
R74 - R75		11
R75 - R76		11
R76 - R77		11
R77 - R78		11
R78 - R79		11
R79 - R80		11
R80 - R81		11
R81 - R82		11
R82 - R83		11
R83 - R84		11
R84 - R85		11
R85 - R86		11
R86 - R87		11
R87 - R88		11
R88 - R89		11
R89 - R90		11
R90 - R91		11
R91 - R92		11
R92 - R93		11
R93 - R94		11
R94 - R95		11
R95 - R96		11
R96 - R97		11
R97 - R98		11
R98 - R99		11
R99 - R100		11

APPENDIX 1



UNIVERSITY
of
BOTSWANA

PARTNERSHIP FOR FUNDING AND DEVELOPMENT OF STUDENT ACCOMMODATION AT THE UNIVERSITY OF BOTSWANA GABORONE MAIN CAMPUS: UB/EOI 2023/2024-01

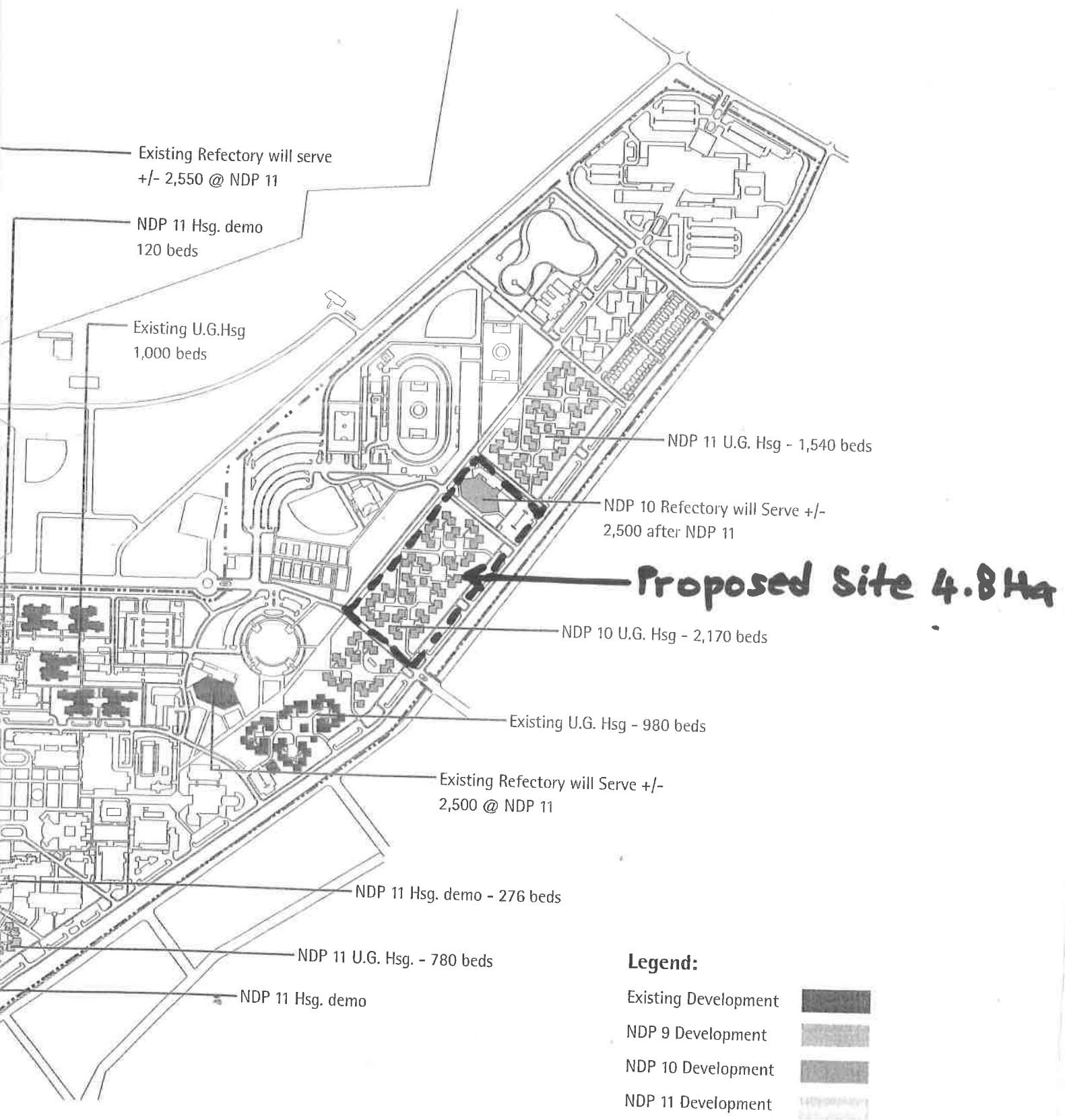


Dimensions 335*151 meters

Area 4.8 ha

SV – 160 dia Stop valve

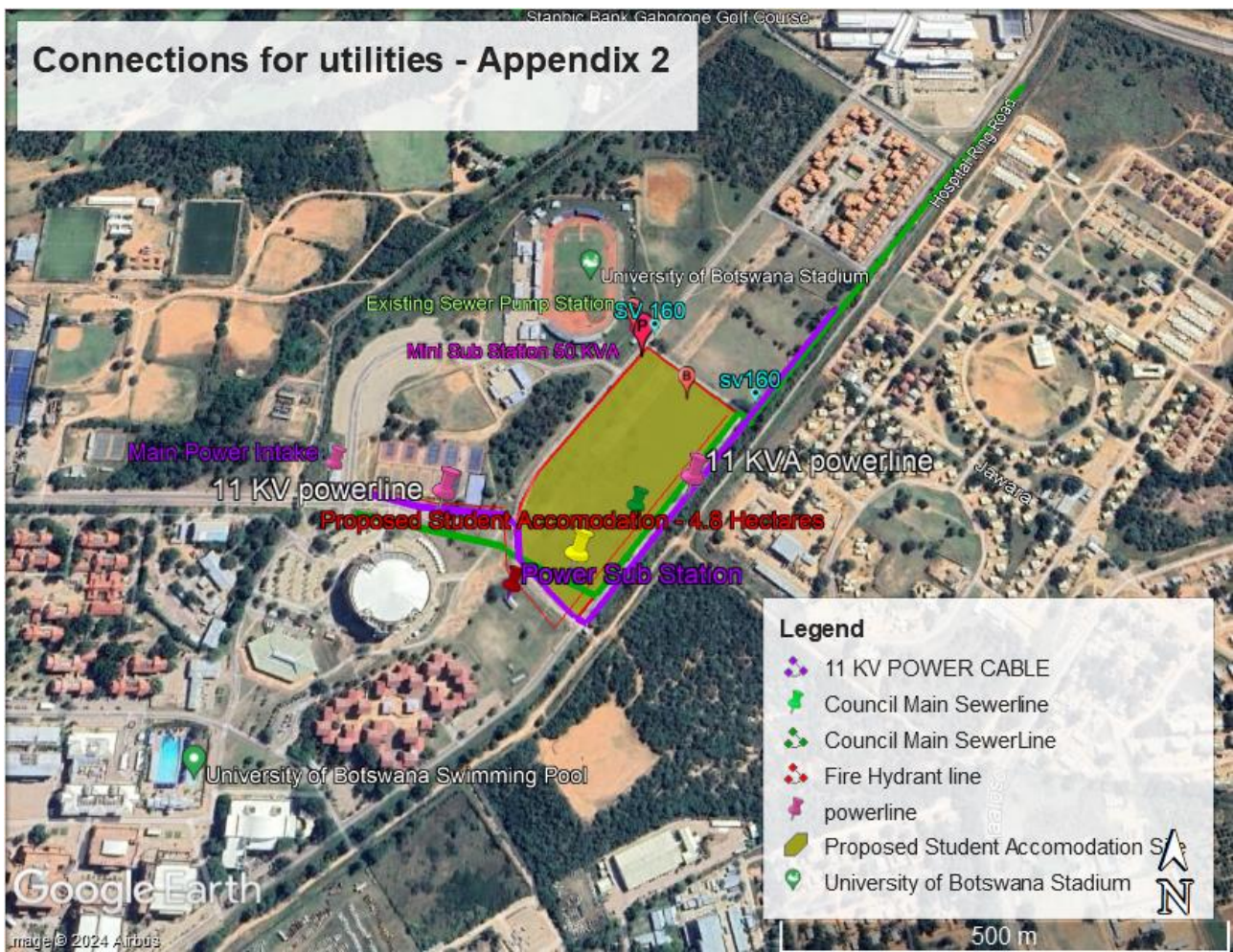
NB: This are indicative existing services, the successful bidder (s) will be required to undertake a thorough site survey.



APPENDIX 3



PARTNERSHIP FOR FUNDING AND DEVELOPMENT OF STUDENT ACCOMMODATION AT THE UNIVERSITY OF BOTSWANA GABORONE MAIN CAMPUS: UB/EOI 2023/2024-01



Dimensions 335*151 meters
 Area 4.8 ha
 SV – 160 dia Stop valve

NB: This are indicative existing services, the successful bidder (s) will be required to undertake a thorough site survey.

